

Project REACH

Fall/Winter 2011 Course Schedule Announced

Special points of interest:

- Fall/Winter Course Schedule Announced!
- New Location!
- Answers to your Frequently Asked Questions
- Course Descriptions

Project REACH is announcing that this Fall/Winter we will be offering: Integrated Communicable Diseases (ICD 101) and Qualified Professional Test Counselor (QPTC) Course.

Should I enroll?

If you are in the community and currently performing HIV rapid testing or interested in doing so, please register for the upcoming trainings offered through Project REACH. If you are not a licensed physician, physician assistant, certified nurse practitioner, midwife or registered licensed nurse, you need to be certified by the Rhode Island Department of Health in order to conduct HIV rapid testing and/or provide pre/post test counseling.

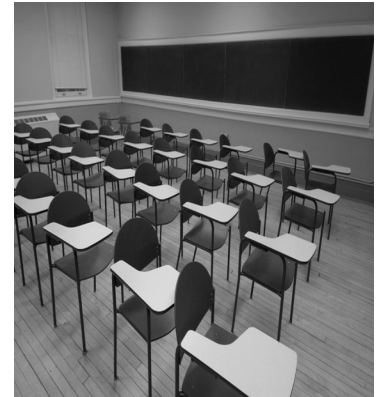
How do I enroll?

In order to enroll in these courses you **must** send in a course registration form to Project REACH (you can find the form on our website). You also need to include a \$40.00 check per course. This check acts as a placeholder and as long as you attend the course, you will receive your check back. Or, if eligible, you can send in the course deposit fee waiver (see website more details)

Course Dates:

Integrated Communicable Diseases 101—November 2-3

Qualified Professional Test Counselor (QPTC) Course—December 5-7



These courses will be held at the Amica Insurance Building in Lincoln, RI. Once you register, you will receive more information including directions and parking information.

Inside this issue:

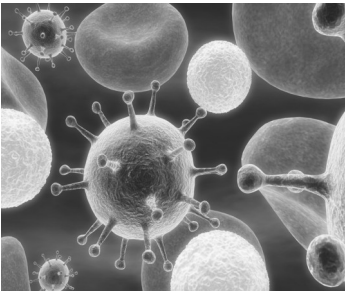
More About ICD 101	2
Frequently Asked Questions	2
More about the QPTC Certification	2
Course Descriptions	3

Project REACH has moved!



Project REACH has moved to a new location! The Drug and Alcohol Treatment Association along with Project REACH moved to:
 200 Metro Center Boulevard, Unit 10
 Warwick, RI 02886
 Website: www.ricpg.org—click on the “About REACH” tab
 Phone: (401) 521-5759 (extension 117)
 Email: qptcpracticum@gmail.com

Do I Have to take Integrated Communicable Diseases?



Integrated Communicable Diseases will be offered November 2-3, 2011. Please remember if you will be taking the course you need to send in a registration form!

Integrated Communicable Diseases 101 (ICD 101) is a prerequisite to the Qualified Professional Test Counselor (QPTC) course. However, if you feel that you have the background knowledge of HIV/AIDS, Viral Hepatitis and STIs you can exempt out of the Integrated Communicable Diseases 101 (ICD 101) course by taking an exam.

The Exemption Exam has been scheduled for:

Tuesday October 18th

If you are interested in taking this exam, you must email qptcpracticum@gmail.com by October 5th.

In order to be able to successfully complete the exam you should have basic knowledge in the following areas in terms of HIV/AIDS, Viral Hepatitis, and STIs:

1. Signs & Symptoms
2. Transmission & Risk Behaviors
3. Basic Epidemiology trends and terms
4. Diagnosis & Treatment
5. Prevention Strategies
6. Referrals & Resources

If you have any further questions or would like to reserve a spot to take this exam, please email qptcpracticum@gmail.com by October 5th—also if this date and time does not work for you we can try to arrange an alternative time.

Frequently Asked Questions

If not available for ICD 101?

If you feel that you have the background knowledge you can take the exemption test (Please see more information above).

If you feel you need to take the course please email the Project Coordinator so your name can be placed on a wait-list for the next course

If not available for the Exemption Test?

If you are not available for the exemption test as listed above, please email the Project Coordinator as soon as possible and it might be possible to arrange another time to take the exemption test.

If not available for QPTC?

The Qualified Professional Test Counselor (QPTC) is a three-day course. We attempt to give you as much notice as possible so that you can arrange your schedule accordingly. However, if you are not able to make it to the course scheduled in the Fall/Winter 2011 session, please email the Project Coordinator so that you can be placed on our waitlist for the next available course.

What is the QPTC Practicum?

Once you have successfully completed the 3-day QPTC Course you will need to complete the QPTC Practicum in order to get certified. The QPTC Practicum is a role-play activity through a counseling session. Each practicum last approximately one hour and you will need a partner.

How do I get certified as a QPTC?

In order to get certified by the RI Department of Health you would need to complete all the required course work through Project REACH which includes: ICD 101 (or successful exemption test), QPTC Course and a QPTC Practicum. Once

completed, you will receive a letter from Project REACH stating that you successfully completed the practicum, you can send that letter along with the designated application to RI Department of Health. Please make sure that you fully

complete the application and send in all required forms and documentations.

Please note that you **DO NOT** send application to Project REACH. All applications need to be sent to the RI Department of Health.



Project REACH Course Descriptions

Integrated Communicable Diseases 101 (ICD 101)

The Introduction to Integrated Communicable Disease 101 (ICD 101) course is designed to introduce community base substance abuse treatment and HIV prevention programs to an integrated model for HIV/AIDS, STI and Viral Hepatitis. This course is a pre-requisite for the Qualified Professional Test Counselor Certification required by the Department of Health for all community and health care based test counselors (who are not licensed physician, nurses or medical students under a physician.). This course is also a requirement for staff at programs funded by the Office of HIV/AIDS & Viral Hepatitis.



Qualified Professional Test Counselor Course (QPTC)

The goal of the Qualified Professional Test Counselor (QPTC) Course is to teach participants how to integrate HIV, STI, and viral hepatitis counseling, to support individuals, identify risks behaviors and develop a personalized action plan leading to the adoption of safer goal behaviors that will reduce the risk of acquiring or transmitting communicable diseases. Participants must have completed Integrated Communicable Disease 101 (ICD 101) - or an equivalent course, within the past 2 years and must be performing HIV and viral hepatitis CTR as part of their job duties, or planning to do so immediately upon course completion. Individuals wishing to exempt out of ICD 101 must successfully complete a written pre-test on Integrated Communicable Disease 101 prior to being accepted into the training.

Approved for 21 contact hours towards the Qualified Professional Test Counselor certification, upon successful completion of a written exam with a minimum score of 80%, and passing the QPTC Practicum.

Project REACH
Project Coordinator: Stephanie DeIPonte
200 Metro Center Boulevard, Unit 10
Warwick RI 02886
401-521-5759 extension 117

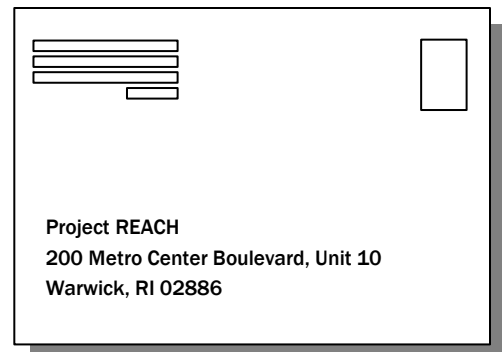
Please Visit Our Website:
www.ricpg.org/about-reach.htm

Join the Project REACH Email List!

Project REACH no longer sends out course catalogues but instead we use our website and emails to announce upcoming events and trainings.

Be sure to keep Project REACH updated on your current email address so that you will get up-to-date information about trainings and other capacity building activities in your inbox!

If you or a co-worker would like to join the email list please email qptcpracticum@gmail.com with your information.



Upcoming Meeting Schedule

September 22nd—CCC Meeting—Miriam Hospital: Sopkin Auditorium

October 13th—RICPG Meeting—Miriam Hospital: Sopkin Auditorium

October 27th—CCC Meeting—Miriam Hospital: Sopkin Auditorium

Rhode Island Community Planning Group Annual Meeting—November 17th
RSVPs are required for this event (RSVP to Maria.Awad@health.ri.gov)